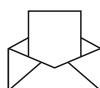




## **FPi 4800**

Efficient, versatile, convenient.

---



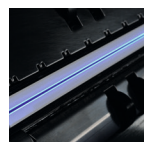
FOLD AND INSERT

Inserting system  
**FPI 4800**

# High performance and maximum ease of use

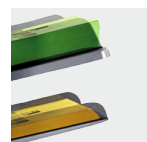
The **FPI 4800** is the ideal inserting system for medium mail volumes of up to 40,000 letters per month. Fast, reliable and quiet, it can take business correspondence, single- or multi-part mailings, invoices, account statements and pay slips and turn them into letters. Its new inserting system is not only smart but also easy to use – plus its ultra-compact size means it saves space.

**High-capacity output stacker**  
Can accommodate up to 500 fully sealed envelopes.



**Flexibility on placement of your codes – wide-ranging read functions**

The (optional) CIS scanner can read control codes of all kinds across the entire width of a sheet without any need for calibration.



**HC station**

With an input capacity of up to 725 sheets, the HC station cuts the time taken for refilling and optimises the whole process.

**On-board operating instructions**  
Thanks to the 7-inch colour touch-screen display and new, intuitive menu, you'll be in tune with the system in no time.



**Viewing window for insertion area**

Enables the inserting process to be observed at any time, thus allowing for adjustments to be made more easily.

**MaxiFeeder (optional)**  
Optional return envelope or enclosures – A5 (156 mm max.) or A4 (356 mm max.).



## 3 output options

The **FPI 4800** is available with either

- 01 a standard output stacker,
- 02 a side-mounted envelope output or
- 03 a vertical high-capacity output stacker.

01



02



03



## ► Feed, fold, insert, seal

Turn documents into letters to fit C6, C6/5 or C5 formats in no time – whichever you like.

## ► Enclosures? Flyers? No problem!

You can attach response cards, flyers or return envelopes to your mailings, or use the fold function to create your own flyers.

## ► Fast, quiet and powerful

The **FPI 4800** can insert as many as 3,800 letters per hour. Its compact dimensions and quiet running make it a good fit for any office.

## ► Two base models

The **FPI 4820** base model offers two feed stations, with the upper station designed for high capacity (HC) to process higher volumes. The **FPI 4830** base model offers three stations. Both models are optionally available with a special lower feed station. This allows special paper types, such as high-gloss paper and paper measuring up to 1 mm thick, to be processed.

## ► Smart and convenient: Automatic Job

Thanks to the Automatic Job function, the system can detect which stations are loaded and automatically start the job with the correct fold settings.

## ► Real double-sheet control

Secure and reliable thanks to actual physical measurement of the paper thickness.

## ► Powerful folding: ten in one

This is how powerful the **FPI 4800** is: it can fold up to ten sheets at once (single fold) or eight sheets in a zig-zag or letter fold.

## ► Secure envelope removal

Optimised envelope feed with size specifications for envelope type selection and a lock for secure envelope removal.

## Fold types:



Single, zig-zag, double parallel and letter folds.



## 7-inch colour touchscreen display

Simply load the **FPI 4800** and use the display to start a new job. The intuitive user prompts will make inserting your letters easy.

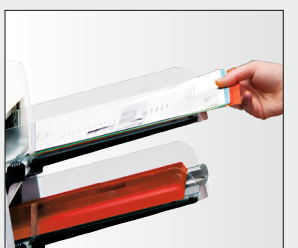
## Interface board

4 USB ports for future applications (hand-held scanner, address printer etc.)



## Daily mail function

Document sets of up to 10 sheets (loose or stapled) can be fed in manually. A stack of enclosures can also be fed in automatically.



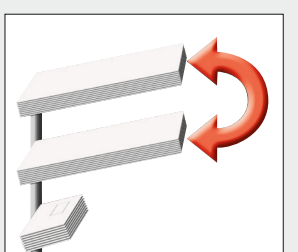
## Collection station

All sheets are gathered together and then folded at the same time. This significantly reduces the risk of a paper jam and gives you professionally processed correspondence.



## Feeder swap

Fill capacity can be increased if multiple stations are in use. Filling the stations alternately guarantees virtually non-stop processing.



## Energy-saving

The machine will switch to standby/energy-saving mode automatically.



# Inserting system

## FPi 4800

### Technical data



### Model variants/ stations

<b>Job memory</b>	50
<b>Read capabilities:</b> OMR, BCR 1D & 2D, customer-specific programming, code library (25 max.)	Optional
<b>Feed station capacity</b>	
Automatic station (80 g/m <sup>2</sup> )	325
HC automatic station for increased volume (80 g/m <sup>2</sup> )	725
Special station, adjustable for critical material (80 g/m <sup>2</sup> )	325
Optional MaxiFeeder (varies by licence)	325 return envelopes or up to 1,200 documents
- A5 (156 mm max.)	
- A4 (356 mm max.)	
Envelopes (C6, C6/5, C5)	325
<b>Vertical high-capacity output stacker</b>	
Max. height (mm)	300
- With C5/6 + 1 × A4, 80 g/m <sup>2</sup> (zig-zag fold)	Up to 400 envelopes
- With C5 + 1 × A4, 80 g/m <sup>2</sup> (single fold)	Up to 500 envelopes
<b>Folding capacity</b>	
Single fold (A4, 80 g/m <sup>2</sup> )	Up to 10 sheets
Letter/zig-zag fold (A4, 80 g/m <sup>2</sup> )	Up to 8 sheets
Set thickness	Up to 2.5 mm
<b>Documents</b>	
Height	90–356 mm
Width	130–236 mm
Grammage/quality	60–250 g/m <sup>2</sup>
Sheet thickness (via special station)	Up to 1 mm
<b>Dimensions (examples)</b>	
<b>Configuration: 3 stations + collection tray</b>	
- Length × height × depth (mm)	1,360 × 720 × 500
- Weight (kg)	79
<b>Configuration: 3 stations + vertical output stacker</b>	
- Length × height × depth (mm)	1,360 × 770 × 500
- Weight (kg)	90
<b>Noise emissions</b>	
Operated alone	66 dB(A)
Operated with vertical stacker	67 dB(A)
<b>Test certificate</b> according to EU declaration of conformity	Yes



#### FPi 4820

- 1 HC station
- 1 automatic station



#### FPi 4820S

- 1 HC station
- 1 special station



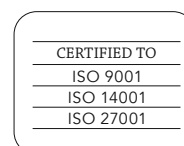
#### FPi 4830

- 3 automatic stations



#### FPi 4830S

- 2 automatic stations
- 1 special station



Subject to technical modifications.

© 2022 Francotyp-Postalia. All rights reserved. The FP logo and Francotyp-Postalia product logos are trademarks or registered trademarks of Francotyp-Postalia GmbH.



Francotyp-Postalia Limited  
74 Questor  
Powdermill Lane  
Dartford, Kent DA1 1EF  
enquiries@fpmailing.co.uk  
[www.fpmailing.co.uk](http://www.fpmailing.co.uk)

